

Important Notice: After update the firmware, you need to do the reset to the radio firstly, power off the radio firstly. Then power it on while holding the PTT and the PF1 button below the PTT at the same time. The radio will start up with a note on the display stating MCU Reset, Please Wait – and do not turn the radio off while it restarts.

After a re-start the radio will display the setting of the date and the time. Use the up-down key to set the current year. Move to the month by pushing the P1 key. Set the month, and use the P1 key to move forward each step. Once done, click the Menu key to save the date and time.

Also please set up the time zone to avoid the date/time error.

Please make sure the codeplug is saved to PC before your do the update and reset.

D868UV firmware update V1.34 and V2.34

Hardware V1.0 --- Please use the firmware V1.34 for updating the radio.

Hardware V1.1 --- Please use the firmware V2.34 for updating the radio.

V1.34 and V2.34 Improvements (dated 2019-1-29)

1. Add black background for main screen
2. Resolved the issue that recording for RX doesn't work well.

V1.33 and V2.33 Improvements (dated 2018-9-30)

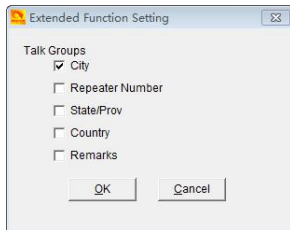
3. Resolved the issue that Last heard after 'all call' group call (TG 16777215) is displayed as TG 20503.
4. Stop the time separator (colon symbol) from flashing on the time of day clock, to avoid clicking sounds to be induced on weak received VHF signals
5. Change the Knob Lock to lock only knobs, no longer lock the up/down key when set up with Knob Lock.
6. Resolve the issue that DMR APRS can not work with Motorola repeater.

V1.32 and V2.32 Improvements (dated 2018-8-28)

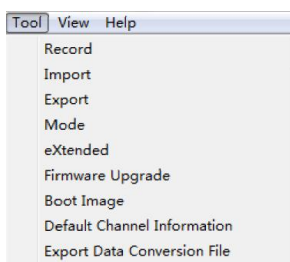
7. Add support of character Ø in the display font in main channel. A Zero is displayed as “Ø”.
8. In radio menu, Talk Group -> TG List -> Select-> Select Contact, allow you assign a new TG for current channel, it is extremely useful when you create a new channel.
How to create a new channel: Hold pressing MENU key, until the LCD display “Next Please Press Dial Key”, press P1 key, the radio will enter into new channel setup.
9. Resolved the time error problem in the Call Log > Last Call > Last Call List.
10. Speed up the zone switch by up and down key.
11. CPS->Optional Setting->Display->CH Switching Keeps Last Caller, allow to keep Last Heard display when switch to other channel.
12. Add DMR APRS Location reporting option in CPS, please refer to the APRS setup codeplug.

Note:

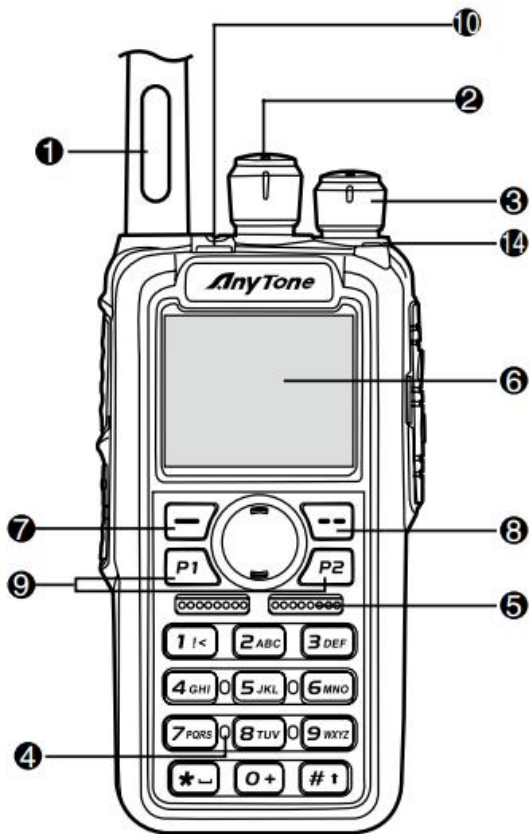
1. Since we have increased a Squelch off option for Analog mode afterwards FW2.23, when you open an old codeplug, please reset the analog squelch firstly.
2. Some reports the exported Talk Groups are missing some information, please remember to check on the boxes when you need more information, in CPS- Tool – Extended function.





3. Tool – Export Data Conversion File, it will allow you save a codeplug in .dcf file. The exported .dcf file can be opened by latest 2.50 Contact Manager. Also you can directly load the .dcf file to CPS2.25 with changing the file open type to .dcf file.



How to know your firmware version



Press 7  (Menu) key to enter the menu, press  key to the Device Info and enter into the menu to check the hardware version.

Hardware V1.0 --- Please use the firmware V1.xx for updating the radio.

Hardware V1.1 --- Please use the firmware V2.xx for updating the radio.

If you use wrong firmware for updating, the radio will not work, but it is not broken. After load into correct firmware, it will work fine.

Actually the V1 and V2 firmware are *almost* same, just in/out is different, so every time when Engineer make updates, he will issue 2 firmwares at the same time.

The V1.1 hardware has below difference compare with V1.0 hardware.

- 1) no jumper wire
- 2) CPU IC in/out pin is different.